

Analysis of anion in river water by ion chromatography with ion suppressor

River water anions were analyzed by suppressed ion chromatography equipped with an auto-suppressor unit. The chromatograms of a standard 7-anion solution (Fig. 1) and river water (Fig. 2) are shown. In addition to chloride, nitrate and sulfate, small amounts of fluoride, nitrous and phosphate ions were detected.

Keywords: 1. anion, 2. STD mixture, river water, 3. IF-424, 4. conductivity detector, 5. suppressed IC

Conditions:

Column:	Shodex IC IF-424 + IF-G
Eluent:	3mM Na ₂ CO ₃
Flow rate:	1.0mL/min
Column temperature:	40 degree celsius
Detector:	Shodex CD-5
Suppressor unit:	Alltech ERIS™ 1000HP
Sample:	STD mixture river water
Injection volume:	50uL

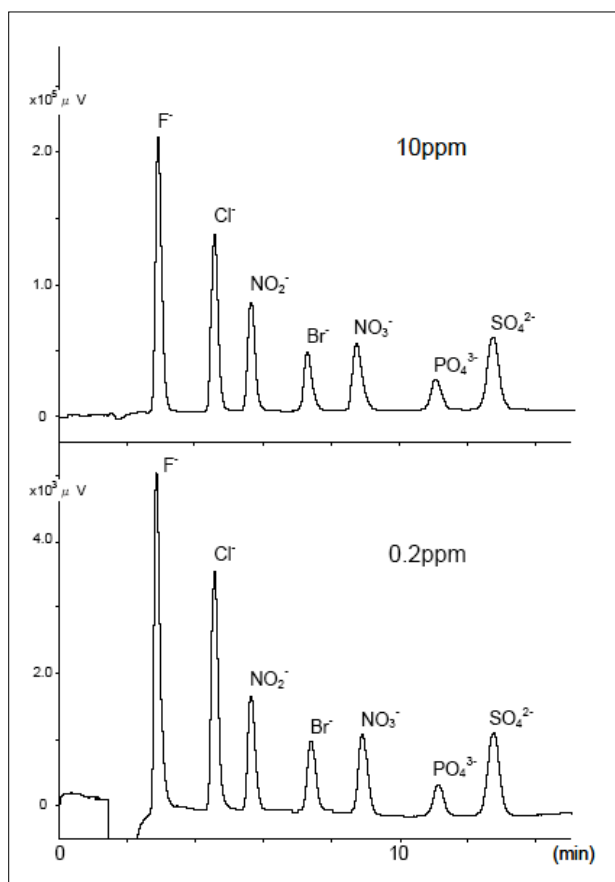


Fig. 1 standard mixture sample

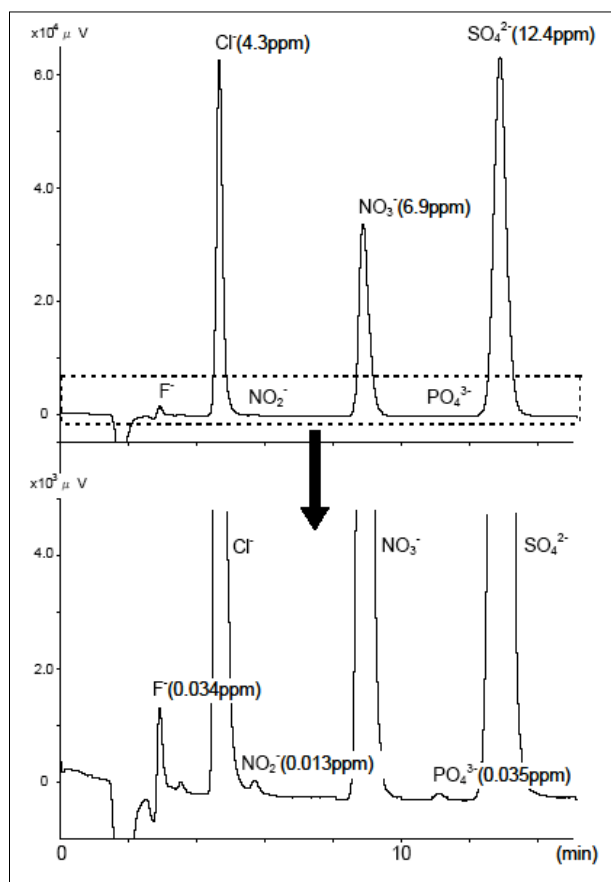


Fig. 2 river water