

BASKET SHAFTS

THE BASKET SHAFT Apparatus 1

The basket shaft is the metallic drive shaft in Apparatus 1 which is connected to the cylindrical basket. See page 4 for more information on Apparatus 1. All shafts are constructed from type 316 electropolished stainless steel.

KEY CONSIDERATIONS

Clip or Clipless?

Spring Clips — The USP standard dissolution basket is designed to attach to the basket shaft using spring clips. Over time these clips can lose strength and fail to grip the basket securely. Baskets that are not gripped securely are likely to exhibit excessive wobble. Only QLA clips are made from special spring tempered 316 stainless steel. Competitors' clips are made from annealed 316 stainless steel. Spring tempered 316 stainless steel clips will maintain its gripping strength much longer than annealed 316 stainless steel clips.

O-Ring — The clipless basket fastens to the shaft using an O-ring instead of clips. While it can be argued that this design reduces wobble and is easier to use, the USP still specifies the use of clips and proof of equivalence may be required if a clipless alternative is to be used.

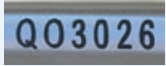


SPRING CLIP STYLE



O-RING STYLE

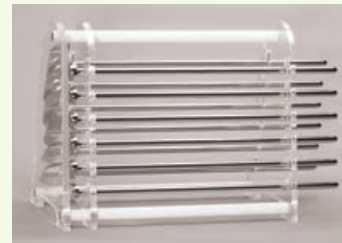
Note: All basket shafts are laser marked with a unique serial number and come with COC.



CARE & MAINTENANCE

Shaft Storage — Bent or scratched shafts fail to comply with USP regulations so it is essential not to store shafts on a desk or loose in a drawer where damage or corrosion can occur. Proper storage in a basket shaft/paddle holder can prevent damage from occurring. See page 11 for Basket Shaft/Paddle Holders.

Wobble — A Wobble Meter (WOBMET-MI) is available to monitor basket shaft wobble. See page 42 for Wobble Meter.



BASKET SHAFT/PADDLE HOLDER



WOBBLE METER

AGILENT COMPATIBLE BASKET SHAFTS

(INCLUDES LEGACY VANKEL)

Part No.	Description	OEM Ref
BSKSHT-13	14.5" (370mm) Basket Shaft for V-Series, Spring Clip Style, 316 SS, Serialized	13-3615
BSKSHT-15	15" (380mm) Basket Shaft, Spring Clip Style, 316 SS, Serialized	12-2070
BSKSHT-15C	15" (380mm) Conical Basket Shaft, Spring Clip Style, 316 SS, Serialized	12-2075
BSKSHT-15CO	15" (380mm) Conical Basket Shaft, Push-On Style, 316 SS, Serialized	12-2050
BSKSHT-19	19" (480mm) Basket Shaft, Spring Clip Style, 316 SS, Serialized	12-2080
BSKSHT-19C	19" (480mm) Conical Basket Shaft, Spring Clip Style, 316 SS, Serialized	12-2081
BSKSHT-19CO	19" (480mm) Conical Basket Shaft, Push-On Style, 316 SS, Serialized	12-2056
BSKSHT-21	21" (535mm) Basket Shaft, Spring Clip Style, 316 SS, Serialized	13-3620
BSKSHT-24	24" (610mm) Basket Shaft, Spring Clip Style, 316 SS, Serialized	13-3629



BSKSHT-13, BSKSHT-15, BSKSHT-19, BSKSHT-21, BSKSHT-24



BSKSHT-15C, BSKSHT-19C



BSKSHT-15CO, BSKSHT-19CO

DISTEK COMPATIBLE BASKET SHAFTS

Part No.	Description	OEM Ref
BSDRNG-16	16.5" (420mm) Basket Shaft, Standard Push-On Style, 316 SS, Serialized	2821-0074
BSDRNG-19	19" (480mm) Basket Shaft, Standard Push-On Style, 316 SS, Serialized	QLA
BSKSHT-16.5	16.5" (420mm) Basket Shaft, Spring Clip Style, 316 SS, Serialized	QLA
SHFT16.5-DK	16.5" (420mm) Detachable Shaft, 316 SS, Serialized	2800-0165
SHFT21-DK	21" (535mm) Detachable Shaft, 316 SS, Serialized	2800-0334
SHFT21-NPD	21" (535mm) Detachable Shaft, PTFE coated over 316 SS, Serialized	2800-0334-T
BSKHUB-DK	Basket Adapter Hub for Standard Push-On Style, 316 SS, Serialized	2821-1052
BSKHUB-DKC	Basket Adapter Hub for Evolution Style, 316 SS, Serialized	2821-0459
BSKCLP-DKC	Basket Clip for Evolution Style, 316 SS	3100-0017
ORING-DK	Red Silicone O-Ring for Distek Basket Hubs (Pack/12)	5570-8007
ORING-SHFT	Black Viton O-Ring for Distek Detachable Shafts (Pack/12)	5570-8044
TUMSCR-DK	Shaft Collar with Thumb Screw for 2100 Series	2821-0094



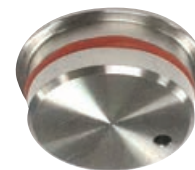
BSDRNG-16, BSDRNG-19



SHFT16.5-DK, SHFT21-DK



BSKCLP-DKC



BSKHUB-DK



BSKHUB-DKC

ERWEKA COMPATIBLE BASKET SHAFTS

Part No.	Description	OEM Ref
BSKSEW-15	15" (380mm) Basket Shaft with 10mm OD, Spring Clip Style, 316 SS, Serialized	QLA
BSKSEW-19	19" (480mm) Basket Shaft with 10mm OD, Spring Clip Style, 316 SS, Serialized	QLA



BSKSEW-15, BSKSEW-19

HANSON (SR8-PLUS) COMPATIBLE BASKET SHAFTS

Part No.	Description	OEM Ref
BSKSHT-16	16" (405mm) Basket Shaft, Spring Clip Style, 316 SS, Serialized	65-237-000



BSKSHT-16

Note: Hanson Vision 2-piece Shafts can be found in SPIN SHAFT Section, page 14.

SOTAX COMPATIBLE BASKETS

Part No.	Description	OEM Ref
BSKSHT-ST	Basket Shaft with 10mm OD, Spring Clip Style, 316 SS, Serialized	QLA



BSKSHT-ST

Don't see what you're looking for in this catalog?

QLA continually adds new products and has the largest inventory of dissolution accessories available. Most items are in stock and ship within 24 hrs!

Be sure to check out our website at www.QLA-LLC.com