



## Biotage® Flash 75/150

### Fast Scale-up: Gram To Multi-Gram Quantities Of Target Organic Compounds

Purify up to 400 grams of compound at 1 L/min up to 75% faster than with traditional glass columns. Biotage® Flash 75/150 is a simple and reliable system that contains everything needed for separation scale up.

These rugged systems safely operate at 100 psi enabling fast flow rates and the use of high viscosity solvents. The proven, patented radial compression technology (Figure 12) ensures near zero “wall effects” and channeling inside each column. This maintains the bed’s stability, rendering cleaner, purer fractions in less time and higher overall product yield.

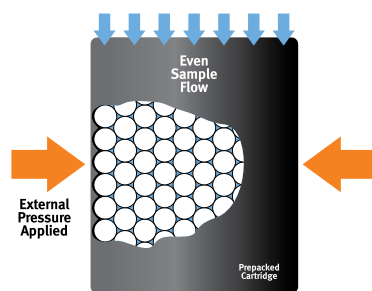
Routinely operating at a flow rate of 250 mL/min (Flash 75) and 1L/min (Flash 150), these systems allow you to quickly scale-up and complete runs, saving hours or even days of purification time.

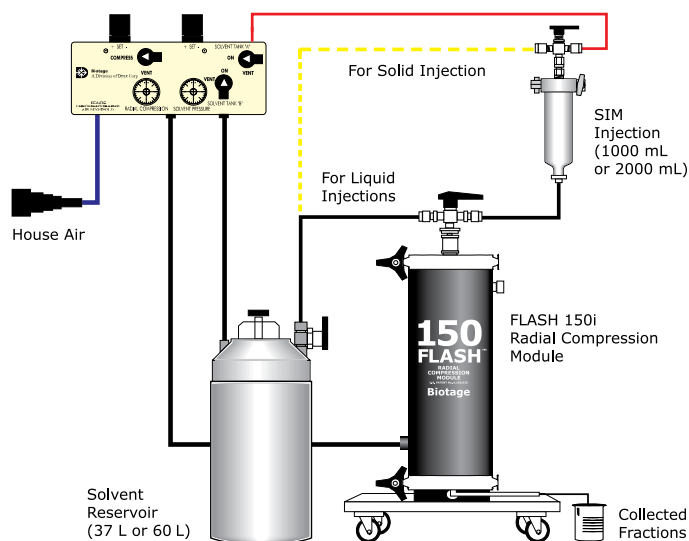
#### Complete Kit

The Biotage® Flash 75/150 system include an easy-to-install radial compression module, a fully integrated air manifold, solvent reservoir, sample injection module (SIM), a start-up kit with all necessary tubing, grounding kit, and a user’s manual. Pre-packed cartridges are ordered separately.

Flash 150 compression modules are mounted onto robust portable bases (included in the system package), which are fitted with casters for easy mobility.

**Figure 15.** The patented radial compression technology keeps the bed homogenous during the run even at high pressures, resulting in higher overall yield.





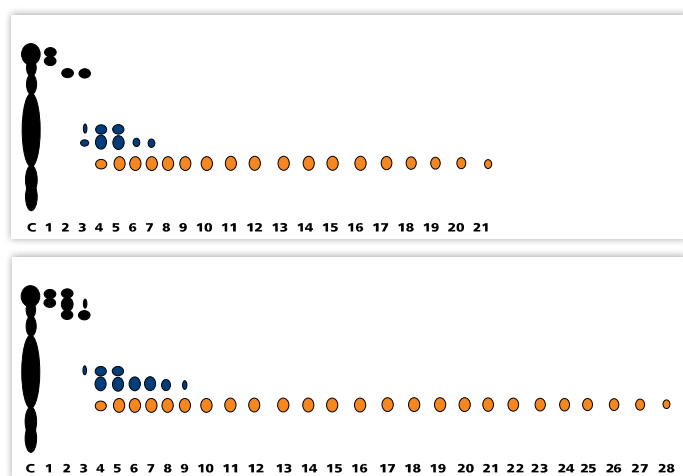
**Figure 16.** Biotage® Flash 75/150 systems use compression modules that hold the cartridges during purification. The different system modules for injection, solvent collection and control are connected to the laboratory's air pressure outlet.

## Advantages

- » Engineered for fast flows
- » Radial compression technology improves separation performance
- » Compression modules radially compress cartridges to maximize sample contact with silica and separation performance (higher sample load greater purity and recovery)
- » Compression modules seal up to 100 psi, ensuring leak-free operation even with high flow rates and reversed-phase solvents
- » Fully grounded for safety

## Accessories

- » Sample injection modules
- » Solvent reservoirs
- » Compression module barrels



**Figure 17.** In this comparison between a 75 mm x 350 mm Flash 75L cartridge (top) and a 110 mm x 200 mm glass column (bottom), fractions were collected in 2.5 hours using the glass column, while the Flash 75L cartridge required only 40 minutes. In addition to the 73% reduction in purification time, there were fewer mixed fractions, resulting in greater product purity.