

Stratos *Eco* 2405

High Tech for an Amazingly Affordable Price

Premium Knick technology now in high-performance basic versions: The new Stratos *Eco* series is designed for use in almost all standard applications. The reliable 4-wire devices for measuring pH value, conductivity, or dissolved oxygen are the result of our highly efficient product development process.

Complete Solutions for a Wide Range of Applications

- Simple industrial applications
- Downstream applications
- Water treatment
- Aerating of natural waters
- Energy production
- Boiler water
- Cooling water
- Salt brines
- Seawater desalination
- Mineral water
- Ion exchanger regeneration
- Drinking water / well water
- Reverse osmosis
- Fish farming



Stratos *Eco* 2405

Facts and Features

- Simple installation: large terminal compartment, preassembled cabinet
- Wall, post/pipe or panel mounting
- Application in hazardous locations (FM, CSA Class Div 2)
- Large, high-contrast display
- Easy and intuitive operation
- Optical alarm signaling by bright red LED
- Temperature display either in °C or °F
- Easy calibration with process medium
- 2nd current output for temperature measurement
- 2 floating relay contacts
- Sensocheck continuous sensor monitoring
- Sensoface preventive maintenance indication
- Calimatic automatic buffer recognition
- VariPower® power supply for 24 to 230 V AC/DC
- Concentration display (conductivity)
- Reset to factory settings possible
- 3-year warranty

	4-wire process devices in the Stratos <i>Eco</i> series
pH/ORP measurement	Stratos <i>Eco</i> 2405 pH
Conductivity measurement with 2- or 4-electrode sensors	Stratos <i>Eco</i> 2405 Cond
Inductive conductivity measurement	Stratos <i>Eco</i> 2405 Condl
Dissolved oxygen measurement	Stratos <i>Eco</i> 2405 Oxy

Reliable Flexibility

Uncompromisingly Good

From the calibration timer to the GainCheck automatic device self-test and from the red alarm LED to SensoCheck sensor monitoring, the Stratos **Eco** models contain the well-designed functionality of our proven Stratos devices.

Allows for Worldwide Use

Just one version with an integrated VariPower broad-range power supply unit enables trouble-free operation with any conventional supply voltage (20 to 253 V AC/DC), even with large power grid fluctuations.

Easy to Operate

The self-explanatory user interface ensures comfortable, intuitive operation. Measured values and temperatures are simultaneously displayed on the large, high-contrast LC display; measured value characters in plain text. International icons provide operating messages and signal unusual operating states. Status displays provide information on the current operating mode.

Sensoface Preventive Maintenance Indication



The sensor measures reliably.



The measured values are still acceptable; the sensor must be checked and replaced if necessary.



Unreliable measured values; the sensor must be replaced.

Saves Costs

Circuit technology unrivaled by other manufacturers means fewer electronic components and lower energy consumption. These features result in a MTBF value of 110 years – alongside the unusually long warranty period of 3 years. Stratos **Eco** stands for outstanding availability and extraordinary reliability.

Rugged and Safe

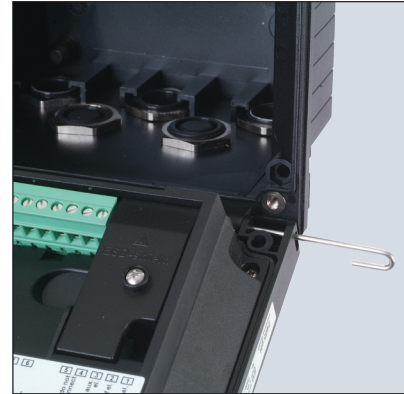
- Rugged PBT housing
- IP 65/NEMA 4 X protection
- Suitable for rigid metallic conduits
- Ex classification Class I Div 2



Stratos Eco 2405

Simple Installation

The ultra flat, fully encapsulated electronics are integrated into the front panel. This provides plenty of room inside the device for wiring and all parts are easily accessible.



Like the other Stratos series, the **Eco** series offers the option for wall, pipe/post, or panel mounting. Installation is simplified by plug-in terminals and an empty polymer housing made of rugged PBT that can be preassembled.

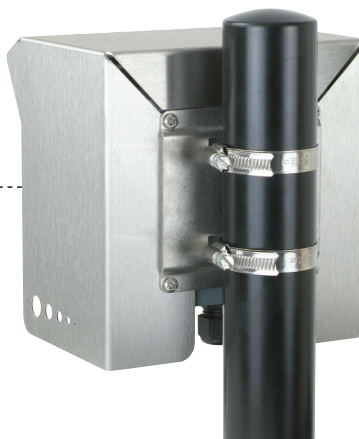


Cable glands:
M20 x 1.5 and NPT 1/2" or
rigid metallic conduit

Mounting Examples

ZU 0274 Pipe-Mount Kit

For mounting on vertical or horizontal posts or pipes.



ZU 0276 Protective Hood

Additional protection from direct weather exposure and mechanical damage.



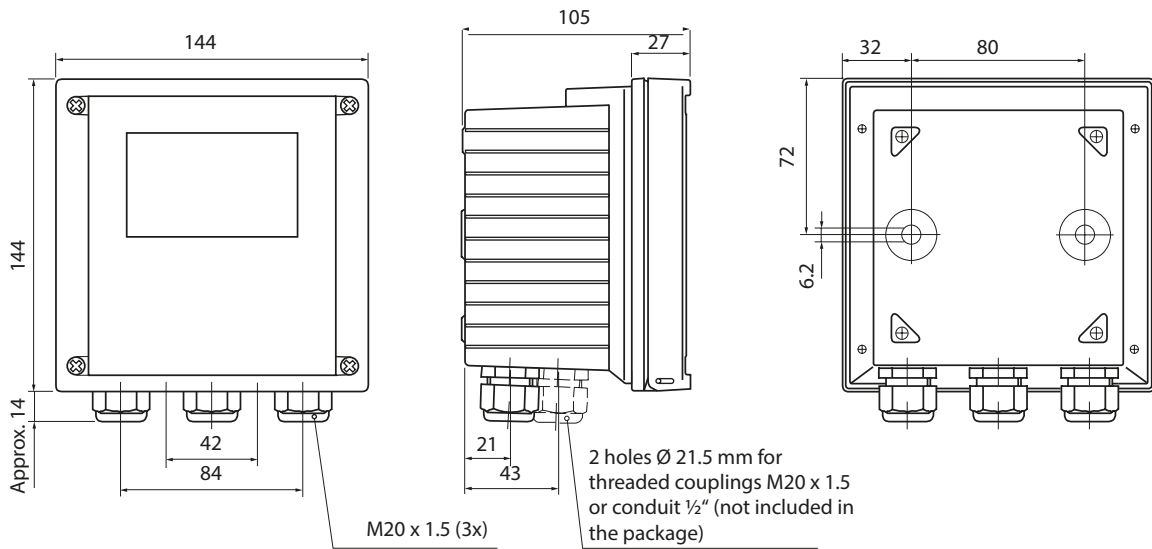
ZU 0275 Panel-Mount Kit

For mounting in standardized panel cutout 138 x 138 mm (DIN 43700), sealed against panel.



Stratos Eco 2405

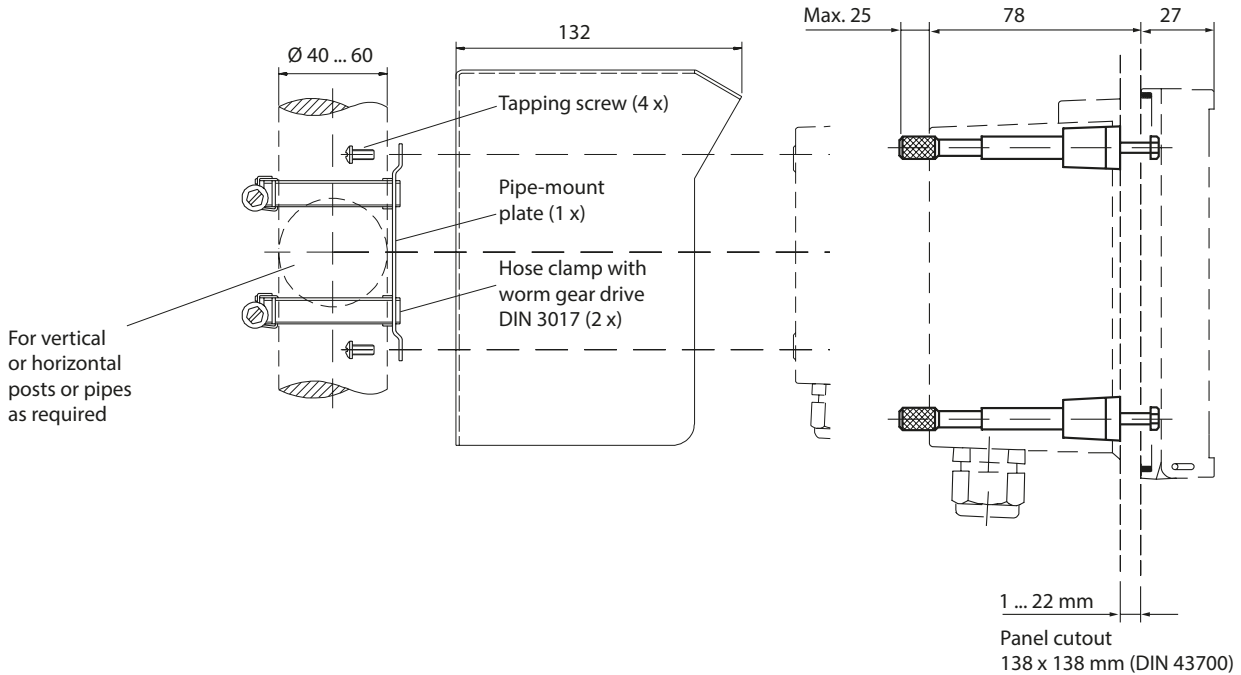
Dimension Drawings



ZU 0274 Pipe-Mount Kit

ZU 0276 Protective Hood

ZU 0275 Panel-Mount Kit



All dimensions in mm.